



## INSKRYWINGSVORM | ENTRY FORM

### Beste skoolkoerant | Best School Newspaper

Daar moet 6 kopieë saamgestuur word of die koerant kan elektronies in PDF-formaat gestuur word.

*Please include six printed copies of the newspaper you are entering or send your entry electronically in PDF format.*

**Tipe skool (merk met X) | Type of school (mark with an X)**

Laerskool | Primary School \_\_\_\_\_

Hoërskool | High School \_\_\_\_\_

**WAARVOOR SKRYF JY IN (JY KAN MEER AS EEN MERK) | CATEGORY ENTERED (MORE THAN ONE ALLOWED)**

BESTE GEDRUKTE SKOOLKOERANT | BEST PRINTED SCHOOLNEWSPAPER: \_\_\_\_\_

BESTE DIGITALE KOERANT | BEST DIGITAL NEWSPAPER: \_\_\_\_\_

Datum van koerant wat ingeskryf word | Date of newspaper you are entering: \_\_\_\_\_

Aantal Skoolkoerante wat per jaar verskyn | Number of schoolnewspapers per year: \_\_\_\_\_

Artikels en datums gepubliseer by OnsKan24 | Articles and dates published at WeCa24: \_\_\_\_\_

Het jou skool al skoolkoerantopleiding gekry | Did your school previously receive school newspaper training? \_\_\_\_\_

Sou jou skool in (verdere) skoolkoerantopleiding belangstel? \_\_\_\_\_

Are you interested in (further) school newspaper training? \_\_\_\_\_

Naam van skool | Name of school: \_\_\_\_\_

Naam van skoolkoerant | Name of school's newspaper: \_\_\_\_\_

Telefoonnommer | Telephone number: \_\_\_\_\_

Faksnommer | Fax number: \_\_\_\_\_ E-pos | Email: \_\_\_\_\_

Naam van skakelonderwyser | Name of liason teacher: \_\_\_\_\_

Selffoonnommer | Cell number: \_\_\_\_\_

Naam van redakteur | Name of editor: \_\_\_\_\_

Selffoonnommer | Cell number: \_\_\_\_\_

## Verklaring deur skoolhoof

Hiermee verklaar ek dat die inskrywing die redaksie se eie werk is en dat onderwysers slegs in 'n toesighoudende hoedanigheid betrokke was. Drukkers en ander media-konsultante het, indien wel betrokke, slegs raadgewend opgetree. Ek aanvaar dat my skool se inskrywing gediskwalifiseer sal word indien dit anders blyk te wees.

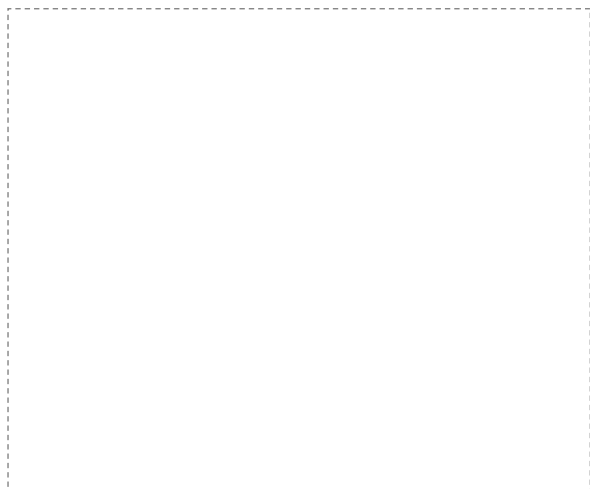
## Declaration by principal

I hereby declare that my school's entry is entirely the work of the editorial team and that the liaison teacher was only involved in an advisory capacity. The printers and any other media consultants who were possibly involved in the process, merely acted as advisors. I acknowledge that, if proven otherwise, this entry will be disqualified.

Naam en van (drukskrif) | *Name and surname (print)*: \_\_\_\_\_ Handtekening | *Signature*: \_\_\_\_\_

Datum | *Date*: \_\_\_\_\_

Skoolstempel | *School stamp*:



## Reëls en inskrywingsprosedure

Net publikasies wat tussen 1 Junie 2015 en 31 Julie 2017 verskyn het, kan ingeskryf word.

Die sluitingsdatum vir inskrywings is **1 Augustus 2017**.

Die beoordelaars se beslissing is finaal en geen korrespondensie sal oor die uitslag van die kompetisie gevoer word nie.

Skole skryf slegs EEN koerant van die afgelope jare se uitgawes in. Skole en redaksies moet self besluit watter uitgawe die beste skoolkoerant van die jare was (bv. die uitgawe van Okt 2016 of Maart 2017 of Junie 2017).

Ses kopieë van daardie een uitgawe moet gepos word vir beoordeling.

Skole kan elektroniese inskrywings stuur. Stuur PDF-koerante met volledige inskrywings na [skool@beeld.com](mailto:skool@beeld.com)

Indien skole meer as een uitgawe inskryf, sal die beoordelaars die eerste uitgawe (gebaseer op die uitgawedatum op die mashoof) beoordeel. Die beoordelaars gaan dus nie 'n keuse tussen die koerante maak as meer as een ingestuur word nie.

Plagiaat sal nie geduld word nie en inskrywings wat daaraan skuldig bevind word, sal dadelik gediskwalifiseer word.

Media24-koerante gee nie individuele terugvoer aan skole of leerders nie, maar deeglike algemene terugvoer en wenke sal na afloop van die kompetisie beskikbaar gestel word.

Die merkstate is beskikbaar op [www.duxedmedia.com](http://www.duxedmedia.com) sodat skole kan sien waarvoor punte toegeken word, of die besonderhede kan verkry word deur 'n e-pos te stuur na [skool@beeld.com](mailto:skool@beeld.com)

### Stuur alle inskrywings na:

Elize Engelbrecht

Beeld in Onderwys

Mediapark

Posbus 333

Auckland Park

2000

### Of KOERIER DIT NA

Elize Engelbrecht

Mediapark

Kingsway 69

Auckland Park

**OF STUUR ELEKTRONIESE INSKRYWINGS NA** Elize Engelbrecht by [skool@beeld.com](mailto:skool@beeld.com)



**MEDIA24**

## Competition rules and entry procedures

All school newspaper publications published between 1 June 2015 and 31 July 2017 qualify.  
The competition's closing date is **1 August 2017**.

The judges' decisions are final and no correspondence will be entered into once the winners have been announced.

Schools can only enter ONE newspaper edition (e.g. Aug. 2015, Nov. 2014, March 2015 or June 2015) that appeared during this time period mentioned in point 1. Schools and editorial teams should decide on the best edition and send six printed copies of this one edition.

Schools can send PDF entries of their school newspapers, along with the entry form to [skool@beeld.com](mailto:skool@beeld.com)

If a school enters more than one edition, only the first edition (as indicated by the publication date on the masthead) will be judged. The judges will not choose between various editions if more than one is submitted.

Plagiarism will not be tolerated. Schools found guilty of this will immediately be disqualified.

Media24 Newspapers will not give any individual feedback to schools or learners. Detailed general feedback and hints will however be made available after the competition.

The mark sheets will be available on [www.duxedmedia.com](http://www.duxedmedia.com) to give participants guidelines about how the categories will be judged. You can also send a mail to [skool@beeld.com](mailto:skool@beeld.com) with any additional queries.

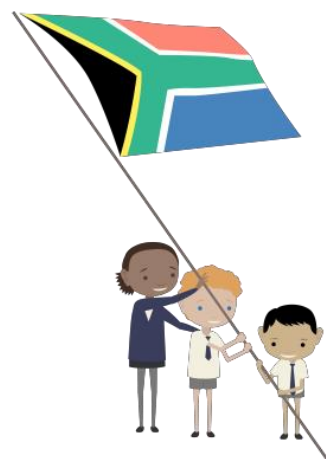
### Send your entries to:

Elize Engelbrecht  
Beeld in Onderwys  
Mediapark  
Posbus 333  
Auckland Park  
2000

### Or COURIER TO

Elize Engelbrecht  
Mediapark  
69 Kingsway  
Auckland Park

**OR SEND ELECTRONIC TO** Elize Engelbrecht at [skool@beeld.com](mailto:skool@beeld.com)



**MEDIA24**